

Collective Emotions Online and Their Influence on Community Life

Anna Chmiel¹, Julian Sienkiewicz¹, Mike Thelwall², Georgios Paltoglou², Kevan Buckley², Arvid Kappas³, Janusz A. Hołyst^{1*}

1 Center of Excellence for Complex Systems Research, Faculty of Physics, Warsaw University of Technology, Warsaw, Poland, **2** Statistical Cybermetrics Research Group, School of Technology, University of Wolverhampton, Wolverhampton, United Kingdom, **3** School of Humanities and Social Sciences, Jacobs University Bremen, Bremen, Germany

Abstract

Background: E-communities, social groups interacting online, have recently become an object of interdisciplinary research. As with face-to-face meetings, Internet exchanges may not only include factual information but also emotional information – how participants feel about the subject discussed or other group members. Emotions in turn are known to be important in affecting interaction partners in offline communication in many ways. Could emotions in Internet exchanges affect others and systematically influence quantitative and qualitative aspects of the trajectory of e-communities? The development of automatic sentiment analysis has made large scale emotion detection and analysis possible using text messages collected from the web. However, it is not clear if emotions in e-communities primarily derive from individual group members' personalities or if they result from intra-group interactions, and whether they influence group activities.

Methodology/Principal Findings: Here, for the first time, we show the collective character of affective phenomena on a large scale as observed in four million posts downloaded from Blogs, Digg and BBC forums. To test whether the emotions of a community member may influence the emotions of others, posts were grouped into clusters of messages with similar emotional valences. The frequency of long clusters was much higher than it would be if emotions occurred at random. Distributions for cluster lengths can be explained by preferential processes because conditional probabilities for consecutive messages grow as a power law with cluster length. For BBC forum threads, average discussion lengths were higher for larger values of absolute average emotional valence in the first ten comments and the average amount of emotion in messages fell during discussions.

Conclusions/Significance: Overall, our results prove that collective emotional states can be created and modulated via Internet communication and that emotional expressiveness is the fuel that sustains some e-communities.

Citation: Chmiel A, Sienkiewicz J, Thelwall M, Paltoglou G, Buckley K, et al. (2011) Collective Emotions Online and Their Influence on Community Life. PLoS ONE 6(7): e22207. doi:10.1371/journal.pone.0022207

Editor: Attila Szolnoki, Hungarian Academy of Sciences, Hungary

Received: February 12, 2011; **Accepted:** June 17, 2011; **Published:** July 27, 2011

Copyright: © 2011 Chmiel et al. This is an open-access article distributed under the terms of the Creative Commons Attribution License, which permits unrestricted use, distribution, and reproduction in any medium, provided the original author and source are credited.

Funding: This work was supported by a European Union grant by the 7th Framework Programme, Theme 3: Science of complex systems for socially intelligent ICT. It is part of the CyberEmotions (Collective Emotions in Cyberspace) project (contract 231323). The work was also supported by Polish Ministry of Science Grant 1029/7.PR UE/2009/7. The funders had no role in study design, data collection and analysis, decision to publish, or preparation of the manuscript.

Competing Interests: The authors have declared that no competing interests exist.

* E-mail: jholyst@if.pw.edu.pl

Introduction

The scientific study of emotions began with the publication of Darwin's "The expression of the emotions in man and animals" in 1872 [1]. Based on this biological framework, *psychologists* have researched affective processes with regard to a) causes, b) mental processes and bodily systems involved, c) intra- and interpersonal regulation, d) communication, and e) consequences. For Darwin, the social nature of emotion was evident but since the end of the 19th century, particularly starting with William James [2], the majority of theories and research have focused on psychological processes within the individual, neglecting the complex behavior that emerges when individuals interact. In the past few years there has been increasing acceptance that the brain is a social organ [3] in the sense that the perception of others' emotional actions leads to complex behaviors that are still poorly understood. Nevertheless, insights have been gained regarding the five issues raised

above, especially concerning social structures emerging due to emotional interactions.

The Internet can be studied as a system of human behavior in which social dynamics [4-12] are evident. Internet communication displays different activity patterns compared to traditional communication [13]. Many people spend increasing amounts of time online on social web sites (cyberspace) like MySpace, Facebook, Twitter, and a variety of blogs. Networks of people interacting in this way are often referred to as virtual communities, based on the influential book by Howard Rheingold (1994) [14]. While everyday connotations of the term community might trigger assumptions or connotations regarding the degree or quality of interaction of members, their social relationship, or the temporal and spatial properties of interactants that might not hold in a virtual community, the term has found common acceptance. Synonymous descriptors are online community or e-community.

Table 1. Datasets properties.

	<i>N</i>	<i>U</i>	<i>T</i>	$\langle e \rangle$	Probability of emotion $p(e)$			Exponent α		
					$p(+)$	$p(-)$	$p(0)$	α_+	α_-	α_0
BBC	2,474,781	18,045	97,946	-0.44	0.19	0.65	0.16	0.38	0.05	0.45
Digg	1,646,153	84,985	129,998	-0.16	0.31	0.48	0.21	0.20	0.11	0.37
Blogs	242,057	N/A	1219	0.14	0.35	0.22	0.43	0.23	0.19	0.16

Properties of the three datasets: number of comments *N*, number of different users giving comments *U*, number of discussions/threads *T*, average valence in the dataset $\langle e \rangle$, probability of finding positive, negative or neutral emotion (respectively $p(+)$, $p(-)$ and $p(0)$) and values of exponents α for positive, negative and neutral clusters (respectively α_+ , α_- and α_0). In case of Blogs data it was impossible to quantify the number of different users and note also a low number of comments in this dataset. Each data set has a different overall average valence – BBC is strongly negative, Digg is mildly negative while Blogs are mildly positive.

doi:10.1371/journal.pone.0022207.t001

Nowadays e-communities are increasingly prevalent and important in everyday life [15] as well as in business contexts where the use of social web functions plays an important part in marketing and customer interaction. Moreover, studies of affective interactions in e-communities are pivotal for understanding social relations in general as only online can large-scale interactions be studied systematically [4,9,12]. This paper uses automatic sentiment analysis to investigate such large scale Internet interactions to identify the key properties of emotion transmission in e-communities and to further our understanding of human interaction in larger social networks.

Although emotions are typically expressed using a variety of non-linguistic mechanisms, such as laughing, smiling, vocal intonation and facial expression, textual communication can be just as rich and has been augmented by expressive textual methods, such as emoticons and slang [16]. Taking advantage of this, sentiment analysis, a research field in computational linguistics and computer science, has evolved rapidly in the last ten years in response to a growing recognition of the importance of emotions in business and the increasing availability of masses of text in blogs and discussion forums. The development of a number of algorithms to detect positive and negative sentiment has also made large-scale online text sentiment research possible, such as predicting elections by analyzing sentiment in Twitter [17], and diagnosing trends for happiness in society via blogs [18] and Facebook status updates [19].

In this paper we discuss the impact of emotional expressions from Internet users on the vitality of online debates. We focus on (i) measuring the transfer of emotions between participants and (ii) the influence of emotions on a thread's life-span.

Results

Collective effects in emotional discussions

We collected over 4 million comments from three prominent interactive spaces: blogs, BBC discussion forums and the popular social news website Digg (for key properties see Table 1). The texts were processed using sentiment analysis classifiers to predict their emotional valence (see Figure 1 and Materials and Methods). To detect affective interactions between discussion participants we calculated statistics for groups of comments with similar emotion levels. Every discussion thread (identified by a unique URL) was analysed separately and was converted into a chain even if a tree structure was present (see Figure S1). We define an emotional cluster of size *n* as a chain of *n* consecutive messages with the same sentiment orientation: i.e. negative, positive or neutral, where before the cluster and after the cluster is a message with a valence different from the cluster valence (see the upper row in Figure 2 and Figure S2). For comparison we present also shuffled data

received from the same discussions (see the bottom row in Figure 2). The clusters in the shuffled data are clearly shorter than the clusters in the original discussion. The reason for this could be emotional interactions between group members in the original data. To prove this hypothesis we checked the distribution of cluster lengths. If affective interactions between group members were absent then the probability of finding a cluster of length *n* among all clusters corresponding to any specific emotion $e = \{-1, 0, 1\}$ (see Materials and Methods for details) would be described by an independent and identically distributed (i.i.d.) random process (see the second section in Text S1 of SI) with the cumulative distribution:

$$P_{i.i.d.}^{(e)}(\geq n) = p(e)^{n-1} \quad (1)$$

Here $p(e)$ is the probability of a negative or positive emotion measured as the number of comments with the valence *e* divided by the total number of comments in the considered data (for exact values see Table 1). Figures 3A and 3B show BBC and Digg data compared to predictions from an i.i.d. process. The agreement between the data and Eq. (1) diverges for $n > 10$, and the frequency of long clusters of the same emotional valence is large compared to the frequency expected for mutually independent messages. For example for BBC forums there were 91 negative clusters of length $n = 25$ while the i.i.d. prediction is $n = 6$; similarly for Digg there were 57 positive clusters of length $n = 11$ whereas the i.i.d. prediction is $n = 2$. It follows that there is a tendency for emotions of the same valence to occur together, suggesting the presence of attractive affective forces between discussion participants: posts tend to trigger follow-up posts of the same valence.

To quantify the strength of the interactions between authors of consecutive posts, consider the conditional probability $p(e|ne)$ that after *n* comments with the same emotional valence the next comment will have the same valence. For an i.i.d. process such a conditional probability is independent from the parameter *n* since by definition $p(e|ne) = p(e)$ for the i.i.d. process. Figure 3C shows however that this probability for the original data is an increasing function of *n* for $n < 20$. The data reveals the relation

$$p(e|e) < p(e|ee) < \dots < p(e|ne) \approx p(e|e)n^z \quad (2)$$

where $p(e|e)$ is the conditional probability that two consecutive messages have the same emotion defined by $p(e|e) = p(ee)/p(e)$ where $p(ee)$ is the joint probability of the pair *ee* that is measured

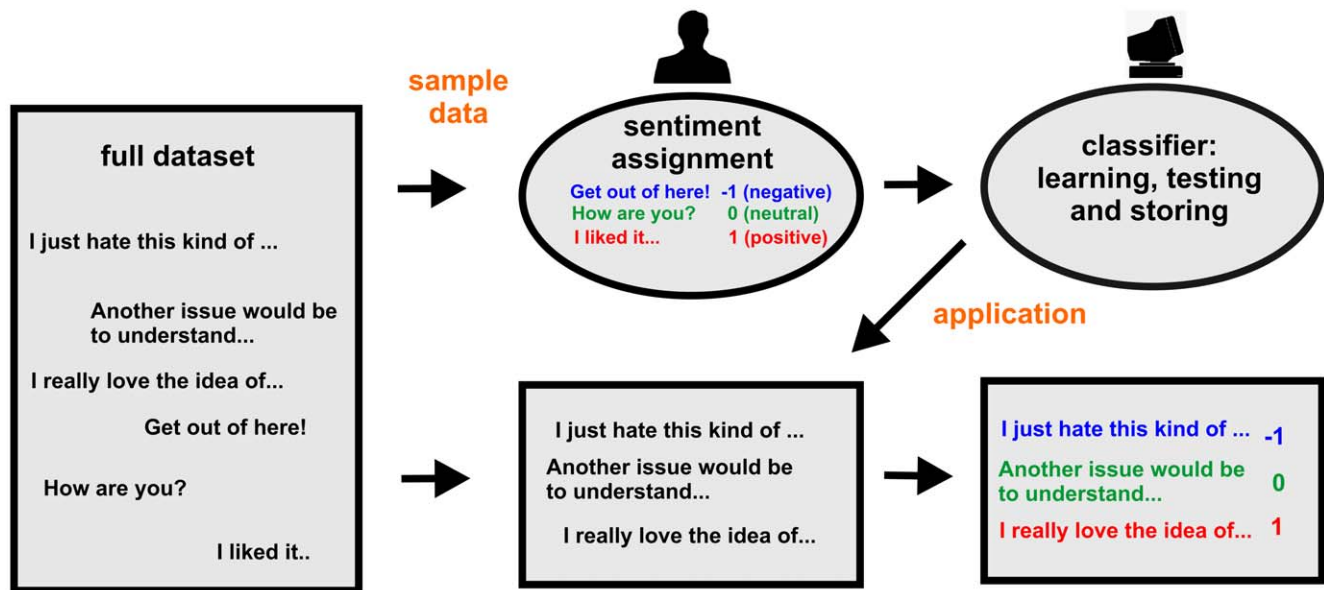


Figure 1. Schematic plot of the process of document classification. A sample from the set of documents is passed to human experts who read the content and manually classify it. The algorithm extracts the characteristics of each class by analyzing the provided documents, i.e., “learns by example”, and stores this knowledge. As result each document is classified with the emotional value -1 , 0 or $+1$ describing its emotional valence. doi:10.1371/journal.pone.0022207.g001

as a number of occurrences of the two consecutive messages with the same valence e divided by the number all appearing pairs. The characteristic exponent α represents the strength of the preferential process leading to the *long-range* attraction between posts of the same emotion. When $\alpha=0$ there is an i.i.d. process. Relation (2) implies that finding a positive message after seven positive comments is more likely than after six. It holds true for $n < 20$, but then saturation follows, with $p(e|ne)$ decreasing to zero for large n (see Figure 3C). Preferential processes are common in complex systems [20] with positive feedback loop dynamics and they can be one of sources responsible for the emergence of fat-tailed distributions, including power-law scaling [21,22]. Using the

relation $p(e|ne) \approx p(e|e)n^\alpha$ gives an analytical approximation to the cluster distribution (see the second section in Text S1 of SI).

$$P_x^{(e)}(\geq n) \approx p(e|e)^{n-1} [(n-1)!]^\alpha \quad (3)$$

This solution (3) is presented in Figure 3 (solid lines in Figures 3A and 3B). The fit with the data is far better than for the i.i.d., especially for large n . The differences between the analytical assumption and the real data come from the artificial extension of the scaling relation $p(e|ne)$, for large n (see the second section in Text S1 of SI).

Sample discussion from “Eastern Religion” BBC forum in September 2005

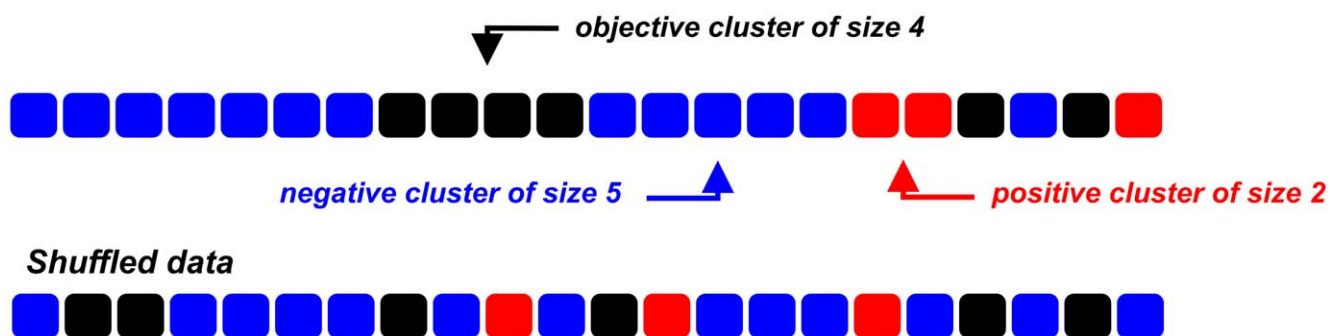


Figure 2. An example of a discussion in the “Eastern religion” BBC forum in September 2005. The original discussion, consisting of 22 posts is shown in the upper row. Each square represents one post: red, blue or black squares indicate that the comment was classified as, respectively, positive, negative or neutral (objective). The bottom row presents shuffled data, i.e., the comments were arranged in a random order. Note the difference between the length of clusters in the original and in the shuffled data. doi:10.1371/journal.pone.0022207.g002

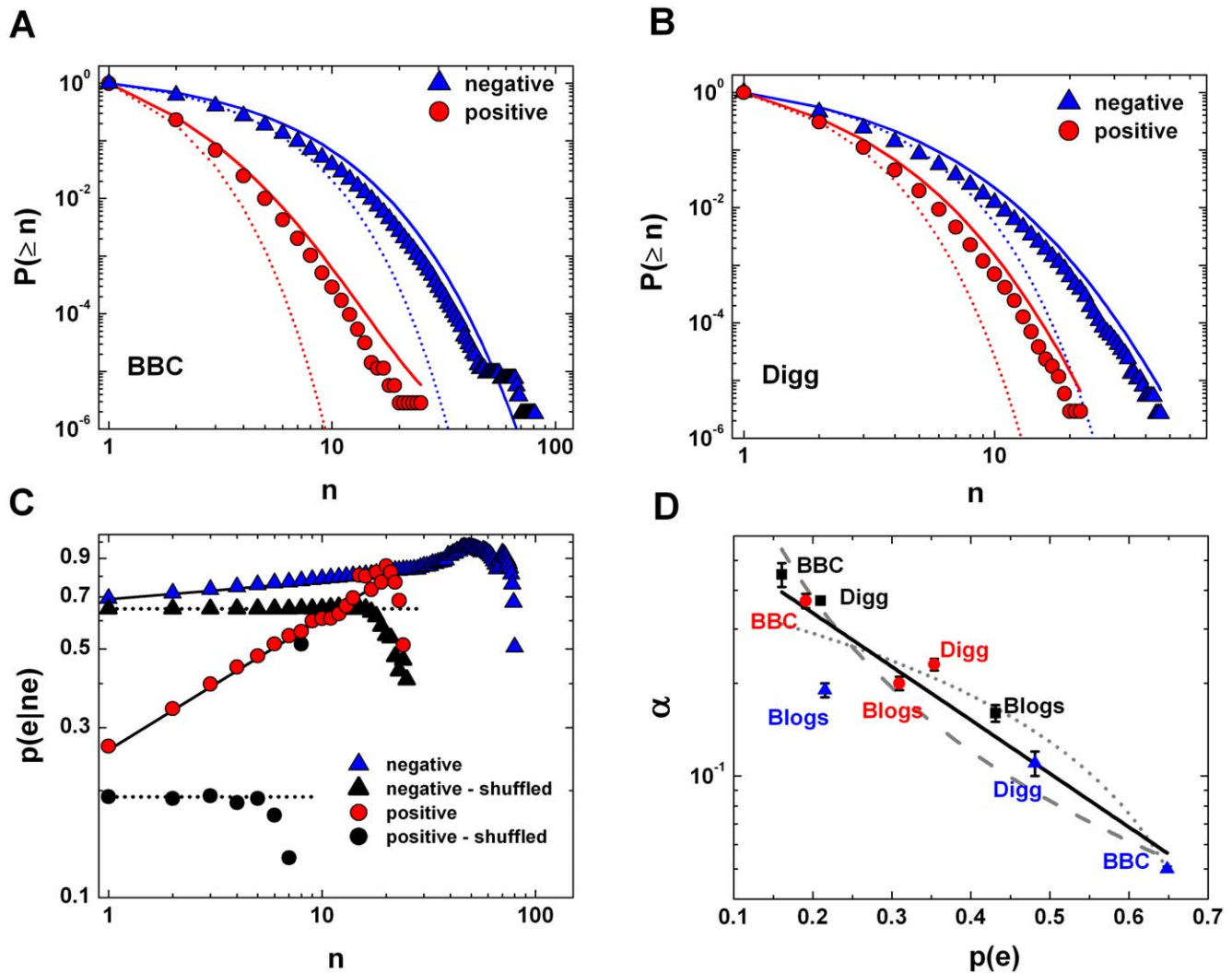


Figure 3. Emotional clustering in Digg, BBC and Blog data. (A–B) Cumulative cluster distributions for the BBC (A) and Digg data (B). Points correspond to the collected data (circles - positive messages, triangles - negative messages). Dotted lines are the i.i.d. process, and solid lines derive from Eq (3). It is clear that messages are mutually dependent and using the model with preferential cluster growth leads to a better fit with collected data. (C) The conditional probability of the next comment occurring having the same emotion for BBC (open symbols) data. Circles come from positive messages and triangles from negative messages. We observe that $p(e|ne) = p(e)n^2$ (solid lines) in the first ten where there is the best statistics available (the largest number of comments) of the gathered data. Filled symbols indicate the shuffled data and dotted lines show the values of emotional probabilities $p(+)$ and $p(-)$ for BBC data (see Table 1). Note that $p_{i.i.d.}(e|ne) = p(e)$ for small values of n . (D) The preferential exponent α decays with emotion frequency $p(e)$ although no exact relation can be received from the collected data. The solid line follows the relation $\alpha = B \exp[-\beta p(e)]$ with $B = 0.75 \pm 0.14$ and $\beta = 4.0 \pm 0.5$ while dotted and dashed curves are, respectively, power-law and linear fits. The value of R^2 for exponential fit is 0.96, while for power-law and linear it is 0.94 and 0.90 respectively. doi:10.1371/journal.pone.0022207.g003

Values of the exponent α for different communities and different cluster types are presented in Figure 3D as a function of the probability $p(e)$ derived from the frequency of a given emotion. A good fit is $\alpha = 0.75 \exp[-4p(e)]$ although power-law and linear approximations also work well, comparing the values of R^2 (see Figure description). This behaviour means that for more frequent emotions the chance to attach a consecutive message with the same valence grows slower with n than for less frequent ones.

Figure 3 confirms that the occurrence of emotional posts cannot be described by the i.i.d. process and there are specific correlations between emotions in consecutive posts. These correlations result from emotional interactions between discussion participants via their messages. The interactions possess an attractive character because clusters of posts with the same emotional valence are

longer than clusters from random distributions. The emotion expressed by a participant depends on the emotions in previous posts: he/she tends to express emotions that have been recently used in the discussion. This observation is consistent with general ideas regarding functions of emotions (e.g. [23]). Thus, positive emotions in interactive contexts could be interpreted as facilitating affiliative responses. With negative emotions the situation is more complicated as different emotional states, such as sadness and anger, would tend to elicit different specific responses in others. Anger, whether directly targeted at interactants or at the topic of the discussion, might elicit anger, sadness in contrast might elicit empathic responses that also expresses sadness. Given that current sentiment analysis algorithms cannot distinguish between such discrete states, a large-scale quantitative analysis of such

hypotheses is, at present, not possible. However, interestingly enough the empirical data we present here might just suggest that it does not matter which discrete negative emotions are expressed - negative statements tend to follow negative statements.

Life-spans of communities

Do community emotions evolve over time? This phenomenon was studied quantitatively for BBC forums as follows. Threads of the same size were grouped together and a moving average of the emotion type of the last 10 comments was calculated for each point. As seen in Figure 4A, shorter threads tend to start from a lower (i.e., less negative) emotional level than longer ones. On the other hand threads end with a similar mean emotional valence value regardless of their lengths: the last point of each data series in 4A (circles, squares, triangles and diamonds) is at almost the same level, about -0.42 . This phenomenon is echoed in Figure 4B where the average emotional valence of the first 10 comments minus the average emotional valence of the last 10 comments is plotted, showing that longer threads have larger changes in emotional valence. Figure 4C also suggests that the initial emotional content (whether positive or negative) may be used as an indicator of the expected length of a thread: low absolute average emotion valences lead to shorter discussions. A possible heuristic explanation is that the first few posts in a thread may give it the potential (emotional fuel) to propel further discussion. Once the emotions driving the discussion dry out, the thread is no longer of interest to its participants and it may die. For threads possessing higher initial levels of emotion it takes more comments to resolve the emotional issue, resulting in longer discussions (cf. results for the discussions at BBC forum in [24]).

Discussion

Understanding the nature of interactions in e-communities is useful for predicting the future shape of society because of the increasing importance of the Internet in communication [6–9]. Since this medium offers both anonymity and the possibility to contact with many others it is important to understand the impact of collective effects within online discussions. Phenomena such as an online disinhibition effect [25] might impact the intensity of emotions expressed which in turn might create differences in the contagion from and reactions to statements made in interaction.

Here, on the basis of automatic sentiment detection methods applied to huge datasets we have shown that Internet users' messages correlate at the simplest emotional level: positive, negative or neutral messages tend to provoke similar responses. This result agrees with observations of singular events corresponding to propagations of emotions in bipartite networks of blogs [8]. Our simple approach demonstrates that the existence of many groups of consecutive messages (i.e., clusters) with the same emotional valence can be explained by preferential processes for cluster growth. The collective character of expressed emotions occurs in several different types of e-community. It was observed for BBC forums and Digg, both communities where negative emotions dominate, and also for the Blogs06 blogs where most comments are positive. This may seem to contradict a previous analysis of online social networks [9] that found negative interactions to be different from positive interactions. However, the links and network motifs in the e-community studied in [9] were not expressing the emotions of participants but relationships like friendship, communication, enmity or punishment.

We hypothesise that the strength of emotional interactions can be indirectly measured by the parameter α expressing the influence of the most recent emotional cluster on the probability

that the next post has the same emotion (Eq. (2)). Table 1 shows that this strength depends not only on the kind of e-community but also on the value of the emotional valence. Surprisingly, stronger collective behavior, corresponding to larger values of α , exists when a given emotion is less frequent.

We are aware of the fact that both our method of data collection and the results of the sentiment classifiers suffer from various errors that can be only partly estimated (see Materials and Methods Section and Ref [26]). These errors, however, are unlikely to lead to a spurious occurrence of the observed clustering effects. Since the classifier treats every post independently from the previous one, there is no memory effect that could be introduced by classifier actions. Assuming that classifier errors are random, it is more likely that a cluster is broken by a random error than that a cluster is formed by a series of errors. Hence the raw cluster statistics are likely to underestimate the strength of the clustering phenomenon existing in the studied communities.

We also give evidence that in BBC forums the initial emotional level of a discussion fuels its continuation: when this fuel is exhausted a discussion is likely to end (Figures 4A, B). This is because higher levels of emotions in the first ten comments in a thread lead to longer discussions (Figure 4C). Although this behavior agrees with observations concerning political discussions in Polish Internet forums [7] where *the growth of discussions was dependent on the degree of controversy of the subject and the intensity of personal conflict between the participants* [7] the effect was not present in the Digg and Blogs06 data so the type of e-community matters for this phenomenon.

Our analysis provides a better understanding of affective interactions between large numbers of people and is an important step towards the development of models of collective emotions in cyberspace [8,24,27–31]. By involving collective phenomena, these patterns go beyond the complexity of the nested intra- and inter-individual feedback loops in face-to-face communication [32]. In the future software tools [33–34] may be designed to support e-communities by measuring the emotional level of discussions. Since negative emotions not only prolong discussions but can also damage cooperation between community members, emotion level information may help participants to keep a community alive.

Materials and Methods

Data sets

The BBC web site had a number of publicly-open moderated *Message Boards* covering a wide variety of topics that allow registered users to start their own discussions and post comments on existing discussions. Our data included discussions posted on the Religion and Ethics and World/UK News message boards starting from the launch of the website (July 2005 and June 2005 respectively) until June 2009. The Blogs dataset is a subset of the Blogs06 [35] collection of blog posts from 06/12/2005 to 21/02/2006. Only posts attracting more than 100 comments were extracted, as these seemed to initialize non-trivial discussions. The Digg dataset comprises a full crawl of digg.com, one of the most popular social news websites. The data spans February to April 2009 and consists of all the stories, comments and users that contributed to the site during this period [36].

Algorithms

Sentiment analysis algorithms typically operate in three stages: (a) separate objective from subjective texts, (b) predict the polarity of the subjective texts, and (c) detect the sentiment target [36]. A variety of methods are used, including machine learning based

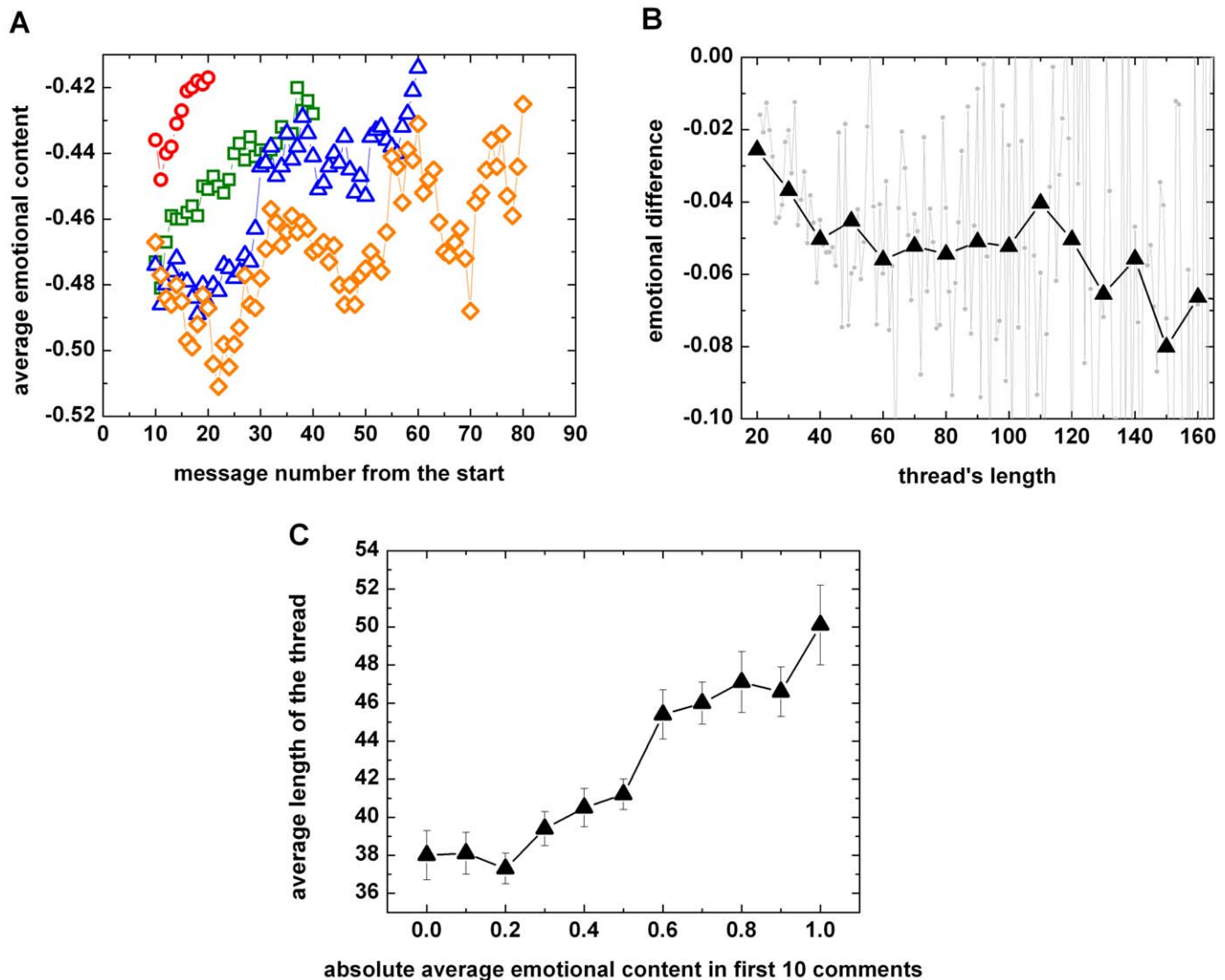


Figure 4. Time dependence of emotions in BBC forum threads. (A) Average emotion valence in the thread (moving average of the previous 10 messages in the thread). Four groups of threads of lengths 20, 40, 60 and 80 are represented by different symbols (respectively circles, squares, triangles and diamonds). Shorter threads start from emotional levels closer to zero. (B), Emotional level (valence) at the beginning of a thread minus the emotional level at the end as a function of thread length (grey symbols). Black triangles display binned data. Longer threads use more emotional 'fuel' over time. (C), Average length of the thread as a function of the absolute value of the average emotion valence of the first 10 comments. Emotional thread starts, whether positive or negative, usually lead to longer discussions. Error bars indicate standard deviations. doi:10.1371/journal.pone.0022207.g004

upon the words used in each text, summarized in vector form [37], and lexical approaches that start with a dictionary of known sentiment-bearing terms and apply linguistically-derived heuristics to predict polarity from their occurrence and contexts [38]. Our algorithm used supervised, machine-learning principles [39]. This is an efficient way to generate a classifier when there is a large amount of human-coded documents because the algorithm can use these to learn the features of documents that typically associate with the different categories. We implemented an hierarchical extension of a standard Language Model (LM) classifier [39]. LM classifiers estimate the probability that a document belongs to all of the available classes and select the one with the highest probability as the final prediction. In our hierarchical extension a document is initially classified by the algorithm as objective or subjective and in the latter case a second-stage classification determines its polarity, either positive or negative. We used a manually annotated subset of approximately 34,000 documents from the Blogs06 data set as a

training corpus. After training, the algorithm would have learned which words typically occur in positive, negative and objective documents. For instance, it can be expected to learn that documents typically containing "love", "hate" or "disagree" are likely to be subjective and that "love" and "hate" are good predictors for the positive and negative categories respectively. Because the distribution of documents per category is uneven, the probability thresholds for both classification tasks were optimized on a small subset. The optimized classifier (described fully elsewhere [40]) has an accuracy of 73.73% for subjectivity detection and 80.92% for polarity detection on a humanly annotated BBC subset. A limitation of LM classifiers in contrast to linguistic algorithms is that they are context-insensitive and can make incorrect predictions when the normal meaning of individual words is changed by their context. The most common case is probably negations: a linguistic classifier would probably identify "not happy" as negative because "not" modifies the meaning of

“happy” whereas a simple LM classifier is likely to ignore “not” altogether as a word that is neutral on its own and identify “happy” as a positive word, making this the polarity prediction. With a large training set, however, LM classifiers can learn the typical polarity of enough words to outperform the linguistic approach in some cases, including the data used here [40]. This may be partly due to the use of sentences and argument structures in our data set that are too complex for simple lexical rules and tend to neutralise their effectiveness. Note that other researchers have proposed many alternative LM variations to the fairly general approach used here. Our specific LM implementation is likely to vary in overall performance with these but the classifications should not change in a systematic way because the same data features are used as the input in all cases.

Valence

There is converging evidence that (hedonic) valence is at the center of emotion experience. This has been demonstrated using a variety of methods [41]. In simple terms, the relevant aspect of any object that elicits emotions is whether we like it or not, or whether it is good for us or not [42]. This distinction is evident from measures of approach/avoidance that clearly indicate that valence is one of the most important determinants of behavior from simple life-forms to humans [43]. Thus, while humans often report affect in terms of basic emotions, such as “happiness”, “anger”, or “sadness”, the degree to which events or objects are evaluated as positive or negative that affects subjective experience (feeling), physiological processes in the periphery and the brain [44], expressive behavior, and action readiness [23]. For the purpose of the present model we shall identify valence as a single dimension that is scaled from -1 (negative) through 0 (neutral), to $+1$ (positive). There is a debate to whether it is possible that positive and negative emotions can co-exist [45] but for practical purposes a single dimension represents emotions well. Similarly, a second (arousal) and occasionally a third dimension (e.g., dominance or power) are considered in dimensional models (see [46]). However, valence explains most of the variance from these dimensions [47]. Thus, for simplicity in the present analysis we use only the primal dimension of affect – valence.

References

1. Darwin C (1872) *The Expression of the Emotions in Man and Animal*. London: Murray. 373 p.
2. James W (1890) *Principles of Psychology*. New York: Holt. 697 p.
3. Dunbar RIM (1998) The social brain hypothesis. *Evol Anthropol* 6(5): 178–190.
4. Onnela J-P, Reed-Tsochias F (2010) Spontaneous emergence of social influence in online systems. *Proc Nat Acad Sci U S A* 107: 18375–18380.
5. Barabási A-L (2005) The origin of bursts and heavy tails in humans dynamics. *Nature* 207: 435–433.
6. Huberman BA, Pirolli PLT, Pitkow JE, Lukose RJ (1998) Strong Regularities in World Wide Web Surfing. *Science* 280: 95–97.
7. Sobkowicz P, Sobkowicz A (2010) Dynamics of hate based Internet user networks. *Eur Phys J B* 73: 633–643.
8. Mitrović M, Paltoglou G, Tadić B (2010) Networks and emotion-driven user communities at popular blogs. *Eur Phys J B* 77: 597–609.
9. Szell M, Lambiotte R, Turner S (2010) Multirelational organization of large-scale social networks in an online world. *Proc Nat Acad Sci U S A* 107: 13636–13641.
10. Castellano C, Fortunato S, Loreto V (2009) Statistical physics of social dynamics. *Rev Mod Phys* 81: 591–646.
11. Kujawski B, Hołyst JA, Rodgers GJ (2007) Growing trees in internet news groups and forums. *Phys Rev E* 76: 036103.
12. Chmiel A, Kowalska K, Hołyst JA (2009) Scaling of human behavior during portal browsing. *Phys Rev E* 80: 066122.
13. Radicchi F (2009) Human activity in the web. *Phys Rev E* 80: 026118.
14. Rheingold H (1994) *The Virtual Community. Homesteading on the electronic frontier*. New York: HarperPerennial. 325 p.
15. Walther J, Parks M (2002) In: *The Handbook of Interpersonal Communication*. Knapp M, Daly J, Miller G, eds. Thousand Oaks: Sage. pp 529–563.
16. Gamon M, Auc A, Corston-Oliver S, Ringger E (2005) *Lecture Notes in Computer Science* 3646: 121–132.

Supporting Information

Figure S1 The difference between the actual tree structure (A) present in the BBC and Digg datasets as compared to the chronological layout of the posts (B). The numbers indicate the order of messages (1 being the first, 10 being the last) while arrows indicate that a post was given in reply to another one (e.g. post 9 is the response to post 7). (TIF)

Figure S2 In case of the i.i.d. random process to obtain the probability of finding a cluster of exactly n consecutive emotional values (here $n=5$ and $e=-1$) one has to take into account two factors: the length of the cluster itself and the issue that on the both borders there should be posts with emotional value other than inside the cluster. Thus in the presented case the probability is proportional to $[1-p(-)]p(-)^5[1-p(-)]$. (TIF)

Text S1 Text S1 includes a detailed derivation of the analytical approximation of cluster length distribution as well as comparison of this approach with the i.i.d. random process, Markov chain and $(k-1)$ Markov model. It also contains the analysis of the influence of the thread length on the emotional cluster distributions and discussion on the number of unique users in emotional clusters. (PDF)

Acknowledgments

We are thankful to all members of CyberEmotions consortium for useful comments and discussions. JAH, ACh and JS would like to thank Agnieszka Czaplicka, Piotr Pohorecki and Paweł Weroński for their help with data cleansing.

Author Contributions

Conceived and designed the experiments: JAH. Analyzed the data: AC JS. Contributed reagents/materials/analysis tools: AC JAH. Wrote the paper: JAH JS MT AK. Provided the data: KB. Designed the classifier and pre-processed the data: GP.

17. Tumasjan A, Sprenger TO, Sandner PG, Welpe IM (2010) in *Proceedings of the Fourth International AAAI Conference on Weblogs and Social Media*. Menlo Park: AAAI Press. pp 178–185.
18. Dods PS, Danforth CM (2010) Measuring the happiness of large-scale written expression: Songs, blogs, and presidents. *Journal of Happiness Studies* 11: 441–456.
19. Pang B, Lee L (2008) Opinion mining and sentiment analysis. *Foundations and Trends in Information Retrieval* 1(1-2): 1–135.
20. Krapivsky P, Redner S, Leyvraz F (2000) Connectivity of Growing Random Networks. *Phys Rev Lett* 85: 4629.
21. Barabási A-L, Albert R (1999) Emergence of scaling in random networks. *Science* 286: 509–519.
22. Krapivsky P, Redner S (2001) Organization of growing random networks. *Phys Rev E* 63: 066123.
23. Frijda NH (1986) *The emotions*. Cambridge: Cambridge University Press. 560 p.
24. Chmiel A, Sobkowicz P, Sienkiewicz J, Paltoglou G, Buckley K, et al. (2011) Negative emotions boost user activity at BBC forum. *Physica A* 390: 2936–2944.
25. Suler J (2004) The online disinhibition effect. *CyberPsychology & Behavior* 7(3): 321–326.
26. Taboada M, Brooke J, Tofiloski M, Voll K, Stede M (2011) Lexicon-based methods for sentiment analysis. *Computational Linguistics* 37: 267–307.
27. Chmiel A, Hołyst JA (2010) Flow of emotional messages in artificial social networks. *Int J Mod Phys C* 21: 593–602.
28. Czaplicka A, Chmiel A, Hołyst JA (2010) Emotional agents at square lattice. *Acta Phys Pol A* 117: 688–694.
29. Mitrović M, Tadić B (2010) Bloggers behavior and emergent communities in blog space. *Eur Phys J B* 73: 293–301.
30. Schweitzer F, Garcia D (2010) An agent-based model of collective emotions in online communities. *Eur Phys J B* 77: 533–545.

31. Mitrović M, Paltoglou G, Tadić B (2011) Quantitative analysis of bloggers' collective behavior powered by emotions. *J Stat Mech* P02005.
32. Kappas A, Descôteaux J (2003) Of butterflies and roaring thunder: Nonverbal communication in interaction and regulation of emotion. In: *Nonverbal behavior in clinical settings*, eds. Philippot P, Coats EJ, Feldman RS, eds. New York: Oxford. pp 45–74.
33. Gobron S, Ahn J, Paltoglou G, Thelwall M, Thalmann D (2010) From sentence to emotion: a real-time three-dimensional graphics metaphor of emotions extracted from text. *Vis Comput* 26: 505–519.
34. Skowron M, Pirker H, Rank S, Paltoglou G, Ahn J, et al (2011) No peanuts! Affective cues for the virtual bartender. *Proceedings of the Twenty-Fourth International FLARIS Conference*. Palm Beach: AAAI Publications. pp 117–122.
35. Macdonald C, Ounis I (2006) The TREC Blogs06 Collection: Creating and Analyzing a Blog Test Collection. Technical Report TR-2006-224 University of Glasgow Department of Computer Science.
36. Paltoglou G, Thelwall M, Buckley K (2010) Online textual communication annotated with grades of emotion strength. *Proceedings of the Third International Workshop on EMOTION (satellite of LREC): Corpora for research on emotion and affect (Valletta, Malta)* pp 5-31.
37. Riloff E, Patwardhan S, Wiebe J (2006) Feature subsumption for opinion analysis *Proceedings of the Conference on Empirical Methods in Natural Language Processing*. (Morristown, NJ, USA) pp 440-448.
38. Wilson T, Wiebe J, Hoffman P (2009) Recognizing contextual polarity: An exploration of features for phrase-level sentiment analysis. *Computational linguistics* 35(3): 399–433.
39. Sebastiani F (2002) Machine Learning in Automated Text Categorization. *ACM Computing Surveys* 34(1): 1–47.
40. Paltoglou G, Gobron S, Skowron M, Thelwall M, Thalmann D (2010) Sentiment analysis of informal textual communication in cyberspace. In *Proc Engage (Springer LNCS State-of-the-Art Survey)* pp 13-25.
41. Feldman LA (1995) Valence-focus and arousal-focus: Individual differences in the structure of affective experience. *Journal of Personality and Social Psychology* 69: 153–166.
42. Zajonc RB (1980) Feelings and Thinking: Preferences Need No Inferences *American Psychologist* 35(2): 151–175.
43. Lang PJ, Davis M (2006) Emotion, motivation, and the brain: Reflex foundations in animal and human research. *Progress in Brain Research* 156: 3–34.
44. Gerber AJ, Posner JE, Gorman DA, Colibazzi T, Yu S, et al. (2008) An affective circumplex model of neural systems subserving valence, arousal, & cognitive overlay during the appraisal of emotional faces. *Neuropsychologia* 33(3): 2129–39.
45. Hemenover SH, Schimmack U (2007) That's disgusting!..., but very amusing: Mixed feelings of amusement and disgust. *Cognition and Emotion* 21: 1102–1113.
46. Posner J, Russell JA, Petersson BS (2005) The circumplex model of affect: An integrative approach to affective neuroscience, cognitive development, and psychopathology. *Development and Psychopathology* 17: 715–734.
47. Reisenzein R (1992) A structuralist reconstruction of Wundt's three-dimensional theory of emotion. In W. Hans, ed. *The structuralist program in psychology: Foundations and applications*. Gottingen: Hogrefe & Huber. pp 141–189.